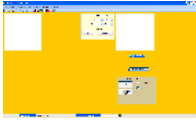


## EXHIBITION FORM-MARKING PROJECT OPTIONS

### 1 Need for Software capabilities: Does marking unit need to be stand-alone, or hooked up to a PC?

TechnoLOG  
MTV2-L-0001



TechnoSAVE  
MTV2-L-0002



TechnoPROD  
MTV2-L-0003



TechnoMATRIX  
MTV2-L-0004



TechnoWindows  
MTV2-L-0006



Techno IO  
MTV2-L-0005



### 2 Need for Hardware options – Z Axis options

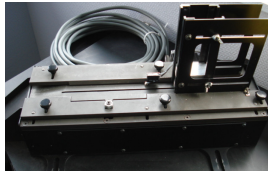
- New Manual Z axis w Quick shift
- Electric up/down Z axis
- Autosens (only for new machine)
- Additional cost for 5m / 10m cables

MTV2 O 0008  
MTV2 O 0009  
MTV2 O 0004  
MTV2 O 0001 / 0002



### 3 Need for Hardware options – part related options

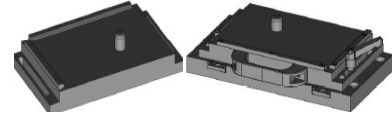
- Automatic plate feeder  
MTV2 A 0013



- Rotary D axis  
MTV2 A 0004 & MTV2 A 0014  
(high or standard capabilities)



- 1 or 2 position Plate support  
(with 1 round magnet)  
ACC001A & ACC001B



- Data Matrix reader  
with Set up software  
ACCLECTDATA

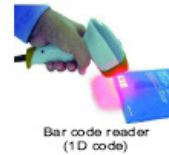


Bluetooth / wired  
Data Matrix reader



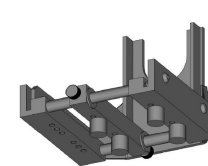
Data Matrix 2 D code reading and verification software

- Bar code reader  
MTV2-A-0005



Bar code reader  
(1D code)

- Round bar end tool v50 / v120  
MTVE A 0051 / 0046



Bar end tool

### 4 Need for Hardware options – marking head & control box related options

- Maintenance kit  
MTV2 A 0048



- Suspension hook for HH model  
ACC503A



- Adjustable protection cover  
MTV2-A-0040 / 0041



- Battery pack (w internal charger)  
MTV2-A-0003



Convenient !  
Quick installation  
of the battery pack

- External battery charger  
MTV2-A-0002



- Battery  
MTV2-E-0013



- External Keyboard UK/USA  
MTV2-A-0012



- RJ 45 (Ethernet)\*  
MTV2 E 0012 or MTV2 A 0021



- Transport trolley + support  
MTV2-A-0009



- START/STOP box  
MTV2-A-0007



- START pedal  
MTV2-A-0008



- Stylus (100 mm)  
TKF053~...

