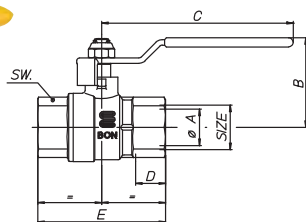


TOP • GAS

Valvola a sfera per gas combustibili serie professionale

Full bore ball valve for fuel gas standard series

ART. S.1221 TOP•GAS

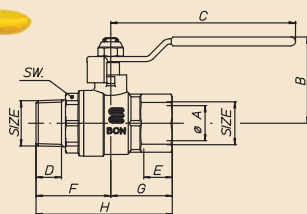


Valvola a sfera due femmine a passaggio totale per gas combustibili con leva in acciaio gialla, nichelata.

Full bore ball valve with steel lever, female/female, nickel-plated.

SIZE	½"	¾"	1"	1¼"	1½"	2"			
øA pass./bore	15	20	25	32	40	50			
B mm	41	49,5	53,5	66	72	86			
C mm	90	105	105	140	140	170			
D mm	15	16,3	19,1	21,4	21,4	25,7			
E mm	59,5	70	83	98,5	108	130			
SW mm	25	31	38	47	47	66			
Peso/Weight gr.	204	346	533	987	1475	2456			

ART. S.1222 TOP•GAS

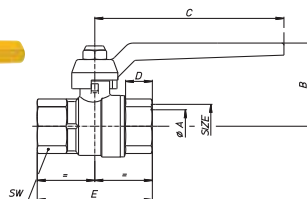


Valvola a sfera maschio/femmina a passaggio totale per gas combustibili con leva in acciaio gialla, nichelata.

Full bore ball valve with steel lever, male/female, nickel-plated.

SIZE	½"	¾"	1"	1¼"	1½"	2"			
øA pass./bore	15	20	25	32	40	50			
B mm	41	49,5	53,5	66	72	86			
C mm	90	105	105	140	140	170			
D mm	13,2	14,5	16,8	19,1	19,1	23,4			
E mm	15	16,3	19,1	21,4	21,4	25,7			
F mm	37,25	42,5	47,5	53,75	59,5	71,5			
G mm	29,75	35	41,5	49,25	54	65			
H mm	67	77,5	89	103	113,5	136,5			
SW mm	25	31	38	47	54	66			
Peso/Weight gr.	223	371	564	977	1447	2477			

ART. S.1224 TOP•GAS

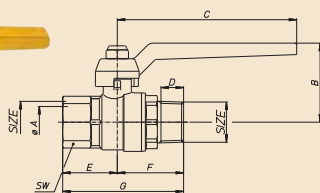
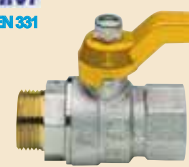


Valvola a sfera femmina/femmina a passaggio totale per gas combustibili con leva in alluminio gialla, nichelata.

Full bore ball valve with aluminium lever, female/female, nickel-plated.

SIZE	½"	¾"	1"	1¼"	1½"	2"			
øA pass./bore	15	20	25	32	40	50			
B mm	42	50,5	54,5	68,5	74,5	83,5			
C mm	95	115	115	150	150	170			
D mm	15	16,3	19,1	21,4	21,4	25,7			
E mm	59,5	70	83	98,5	108	130			
SW mm	25	31	38	47	54	66			
Peso/Weight gr.									

ART. S.1225 TOP•GAS

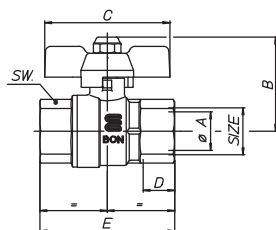


Valvola a sfera maschio/femmina a passaggio totale per gas combustibili con leva in alluminio gialla, nichelata.

Full bore ball valve with aluminium lever, male/female, nickel-plated.

SIZE	½"	¾"	1"	1¼"	1½"	2"			
øA pass./bore	15	20	25	32	40	50			
B mm	42	50,5	54,5	68,5	74,5	83,5			
C mm	95	115	115	150	150	170			
D mm	13,2	14,5	19,1	21,4	21,4	25,7			
E mm	37,25	35	47,5	53,75	59,5	71,5			
F mm	29,75	42,5	41,5	49,25	54	65			
G mm	67	77,5	89	103	113,5	136,5			
SW mm	25	31	38	47	54	66			
Peso/Weight gr.									

ART. S.1227 TOP•GAS

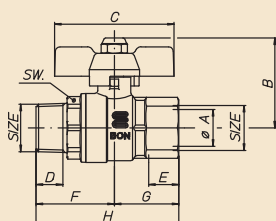


Valvola a sfera due femmine a passaggio totale per gas combustibili con farfalla gialla, nichelata.

Full bore ball valve with T-handle, female/female, nickel-plated.

SIZE	1/2"	3/4"	1"						
øA pass./bore	15	20	25						
B mm	39,5	49	53,5						
C mm	52	65	65						
D mm	15	16,3	19,1						
E mm	59,5	70	83						
SW mm	25	31	38						
Peso/Weight gr.	182	312	499						

ART. S.1228 TOP•GAS

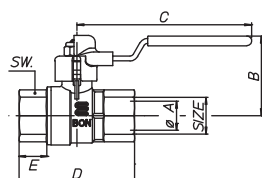


Valvola a sfera maschio/femmina a passaggio totale per gas combustibili con farfalla gialla, nichelata.

Full bore ball valve with T-handle, male/female, nickel-plated.

SIZE	1/2"	3/4"	1"						
øA pass./bore	15	20	25						
B mm	39,5	49	53,5						
C mm	52	65	65						
D mm	13,2	14,5	16,8						
E mm	15	16,3	19,1						
F mm	37,25	42,5	47,5						
G mm	29,75	35	41,5						
H mm	67	77,5	89						
SW mm	25	31	38						
Peso/Weight gr.	201	337	530						

ART. S.1231 TOP•GAS

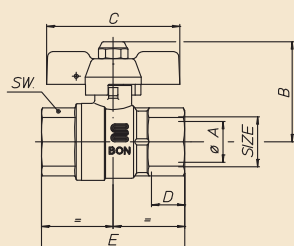


Valvola a sfera due femmine a passaggio totale per gas combustibili con leva in acciaio gialla lucchettabile in posizione di chiuso e aperto, nichelata.

Full bore ball valve for fuel gas, female/female, with steel lever lockable in closed and open position by padlock, nickel-plated.

SIZE	1/2"	3/4"	1"	1 1/4"	1 1/2"	2"	2 1/2"		
øA pass./bore	15	20	25	32	40	50	65		
B mm	90	111	111	140	140	170	170		
C mm	41	49,5	53,5	66	72	86	96,5		
D mm	15	16,3	19,1	21,4	21,4	25,7	30,2		
E mm	59,5	70	83	98,5	108	130	158		
SW mm	31	38	38	47	54	66	83		

ART. S.1217 TOP•GAS



Valvola a sfera due femmine a passaggio totale per gas combustibili con farfalla gialla **piombabile**, nichelata.

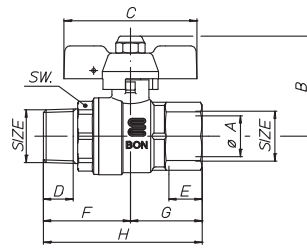
Full bore ball valve with **sealable T-handle**, female/female, nickel-plated.

SIZE	1/2"	3/4"	1"						
øA pass./bore	15	20	25						
B mm	39,5	49	53,5						
C mm	52	65	65						
D mm	15	16,3	19,1						
E mm	59,5	70	83						
SW mm	25	31	38						
Peso/Weight gr.	176	320	500						

TOP • GAS

Valvola a sfera per gas combustibili serie professionale
Full bore ball valve for fuel gas standard series

ART. S.1218 TOP•GAS



Valvola a sfera maschio/femmina a passaggio totale per gas combustibili con farfalla gialla **piombabile**, nichelata.
Full bore ball valve with **sealable T-handle**, male/female, nickel-plated.

SIZE	½"	¾"	1"						
ØA pass./bore	15	20	25						
B mm	39,5	49	53,5						
C mm	52	65	65						
D mm	13,2	14,5	16,8						
E mm	15	16,3	19,1						
F mm	37,25	42,5	47,5						
G mm	29,75	35	41,5						
H mm	67	77,5	89						
SW mm	25	31	38						
Peso/Weight gr.	200	343	530						